



Tracking Spring Monarchs Migration & Milkweed Phenology

Monarch butterfly migration has been changing in North America. Help us understand these changes by participating in this community science project.



01 REPORTING FIRST MONARCH

First arrival of monarchs to their breeding range occur from March to June depending on your location.

- Submit your observation to *Monarch Adult (FIRST sighted)*.
- When reporting, comment on activity and behavior (flying, nectaring, species of flower they are on, basking in shade or sun).



02 REPORTING FIRST MILKWEED

Observations of first milkweed emergence occur sometime between March and June depending on your location.

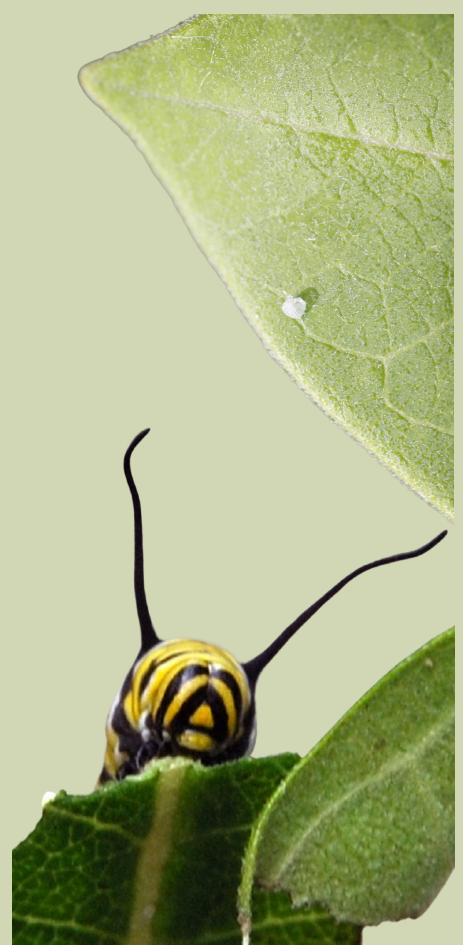
- Submit your observation observation of spring milkweed emergence to *Milkweed (FIRST sighted)*.
- When reporting, comment on the species milkweed.



03 REPORTING FIRST MONARCH EGGS AND LARVAE

The first evidence of breeding monarchs can be found anytime between March and June depending on location. Track first eggs and larvae.

- Submit your observation of first observation of monarch eggs to *Monarch Egg (FIRST sighted)*.
- Submit your observation of first observation of monarch larvae to *Monarch Larva (FIRST sighted)*.
- Comments when reporting can relate to species of milkweed the larvae or eggs are found on.





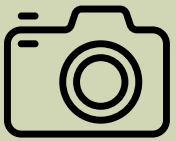
04 REPORTING ADDITIONAL OBSERVATIONS

After your first observations, please continue reporting.

- Additional adult monarch observations to *Monarch Adult Sighted*.
- Additional milkweed observations to *Milkweed Sighted*.
- Additional monarch egg observations to *Monarch Egg Sighted*.
- Additional monarch larvae observations to *Monarch Larva Sighted*.
- Additional monarch larvae observations to *Monarch Other Observations*.



RESOURCES AND TIPS:



There should be one report of first observations (i.e. first adult monarch, first milkweed, etc.) per volunteer.



Please remember to upload a photo when submitting your observation.



journeynorth.org

